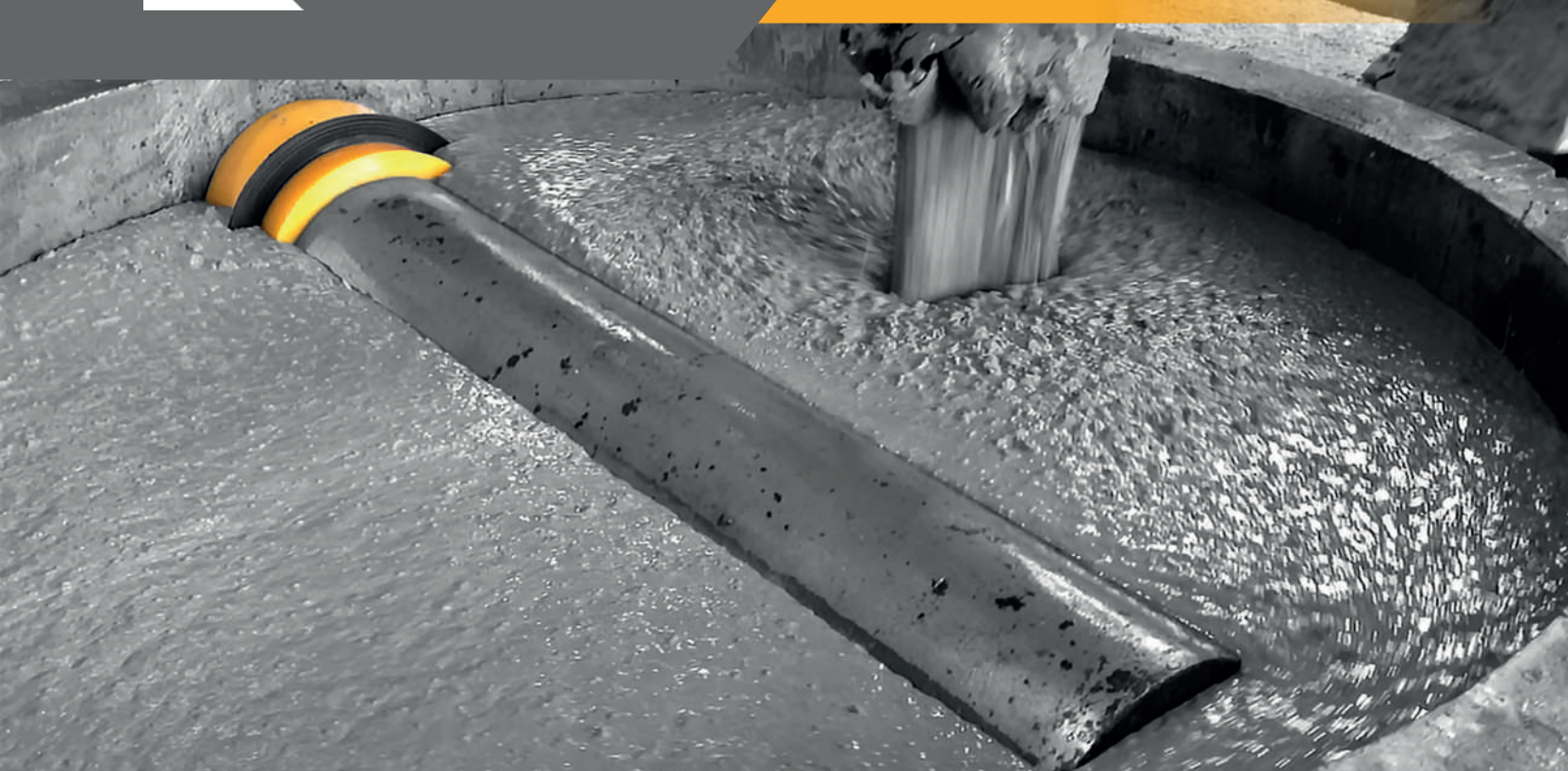




# CONCRETE



## WATER NETWORK

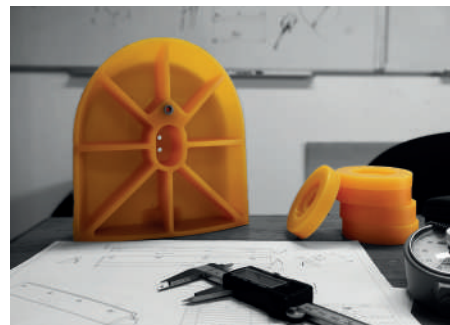
As a partner of the water system and public works sector, PIM supports you in the manufacture of your concrete parts.

## BUILDING

Our Polyurethane has technical characteristics specifically designed for concrete structures.

## SPECIFIC PARTS

Polyurethane has unlimited uses in the concrete sector. Share your ideas or challenges with PIM, and through our collaborative design process we will provide cost effective solutions.



## YOUR BUSINESS

**MANUFACTURER OF PRECAST CONCRETE PARTS, SLABS, PAVING STONES, RAILWAY SLEEPERS AND CONCRETE PARTS FOR WATER NETWORK.**

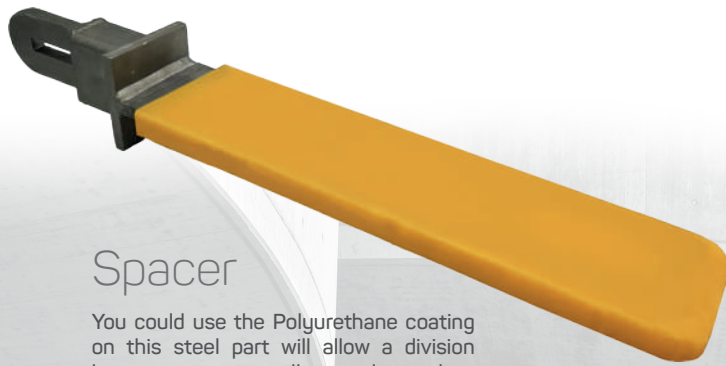


# PIM

Créateur de solutions polyuréthane

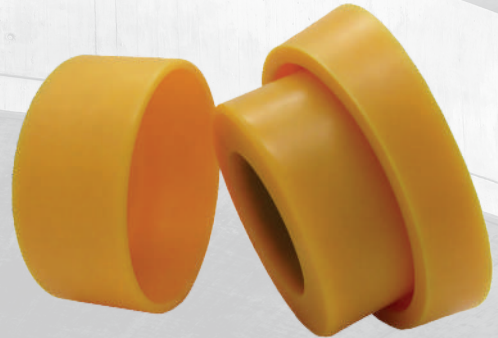


## MULTIPLE PRODUCTS



### Spacer

You could use the Polyurethane coating on this steel part will allow a division between concrete walls stored on racks.



### Pipe socket recess

As its name suggests, this part allows you to make a recess in concrete to accept a pipe socket in a manhole.



### Lid mould

Similar to the rain water manhole, the concrete cover can be easily ejected from the mould. It is available in several sizes and to order.

### Rain water manhole

This part is a mold for water system manholes. Our Polyurethane makes it very easy to eject.

## CHARACTERISTICS OF POLYURETHANE

Hydrolysis resistant polyurethane

Long service life

Resistance to abrasion

Reduction of mould release oil consumption

[www.pim.fr](http://www.pim.fr)

Z.I Les Trois Voies  
16 route de Genas  
69330 Pusignan - France

t. +33(0)4 78 31 31 87  
f. +33(0)4 72 05 10 08  
info.pim@pim.fr